

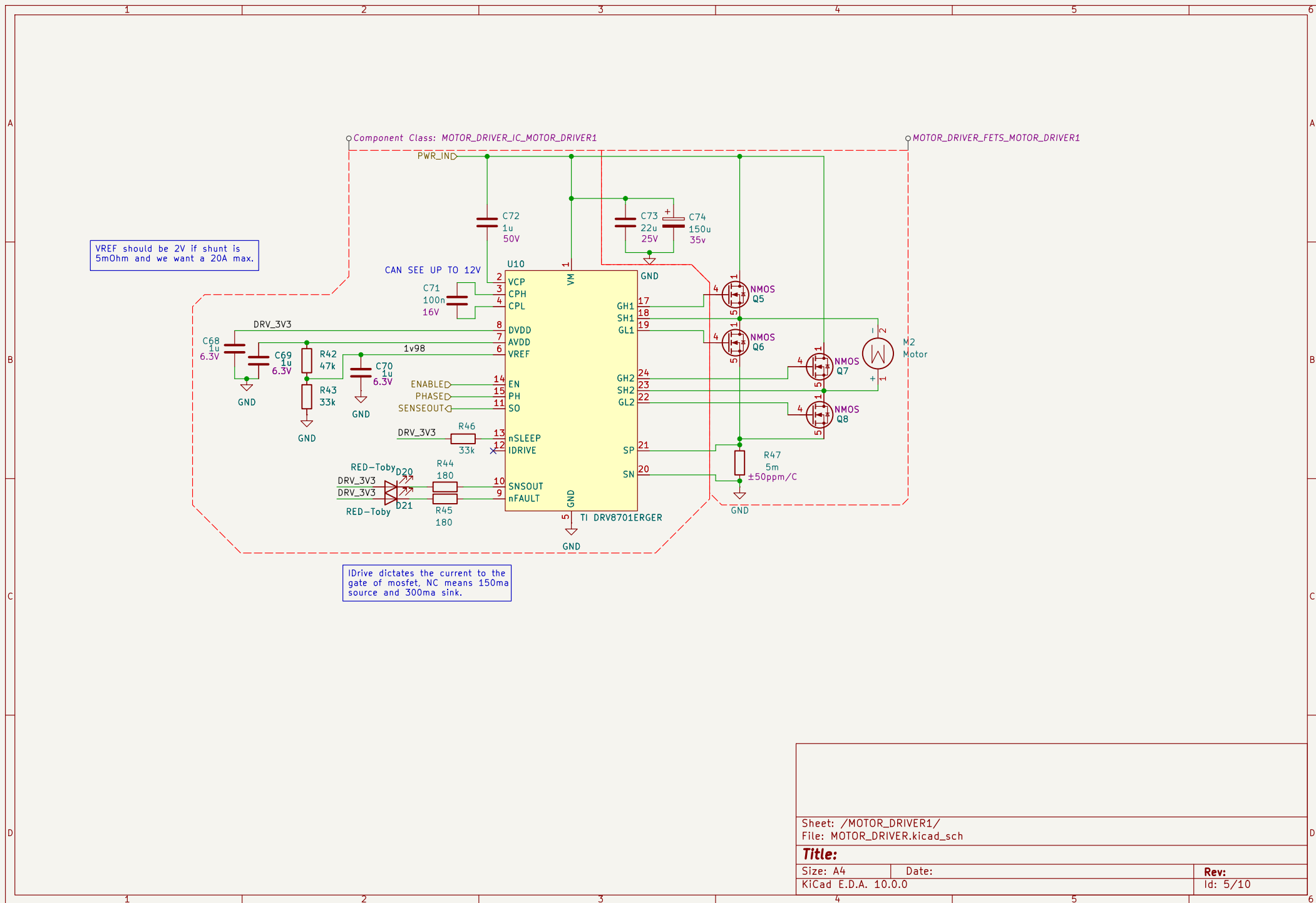
Sheet: /PWR/POWER_CONNECTORS/
File: POWER_CONNECTORS.kicad_sc.kicad_sch

Title:

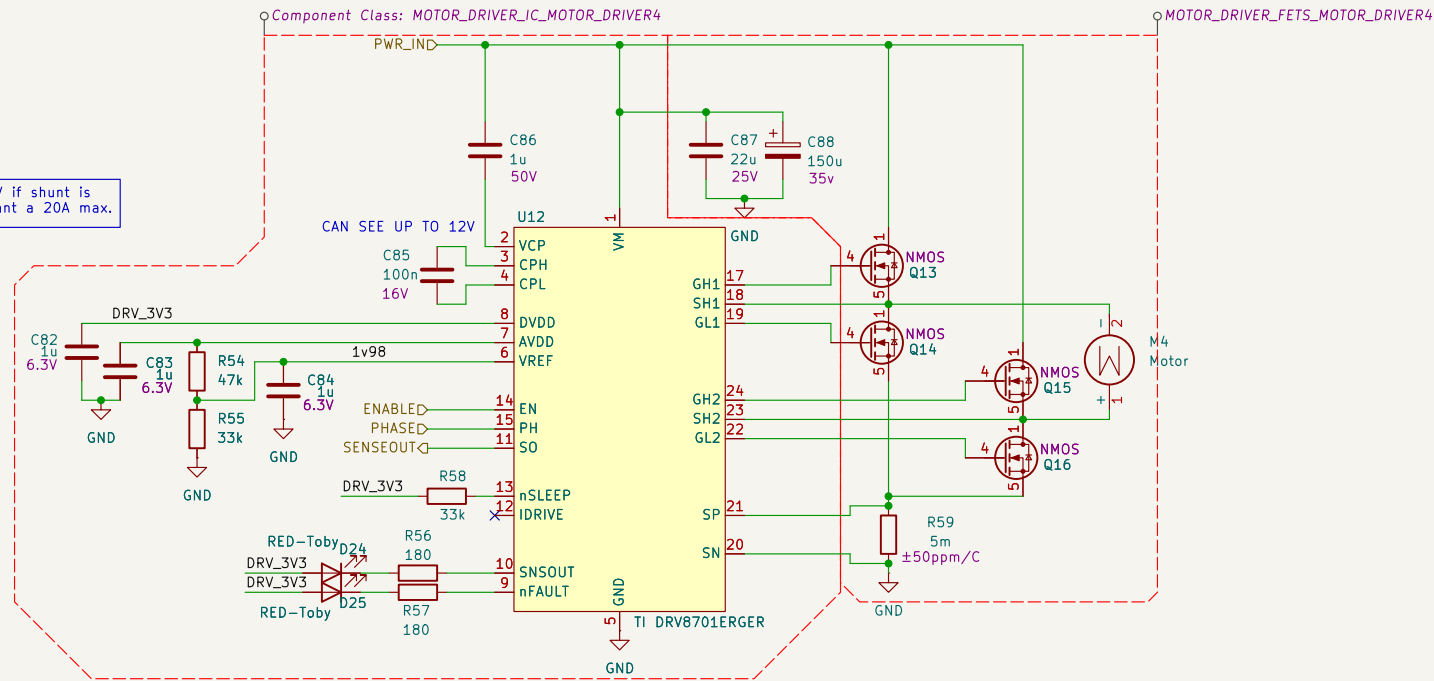
Size: A4
KiCad E.D.A. 10.0.0

Date:

Rev:
Id: 10/10



VREF should be 2V if shunt is 5mOhm and we want a 20A max.



IDrive dictates the current to the gate of mosfet. NC means 150ma source and 300ma sink.

Sheet: /MOTOR_DRIVER4/
File: MOTOR_DRIVER.kicad_sch

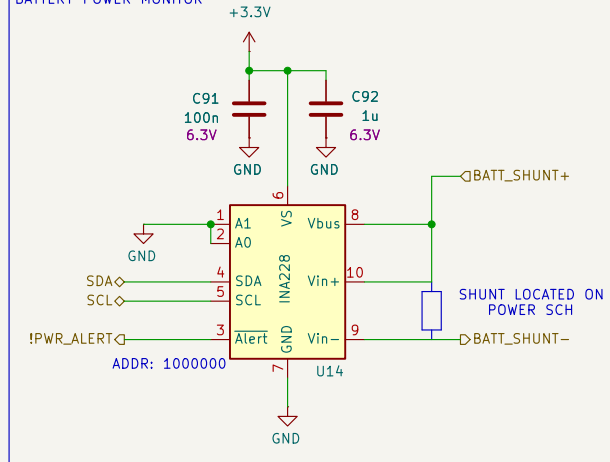
Title:

Size: A4
KiCad E.D.A. 10.0.0

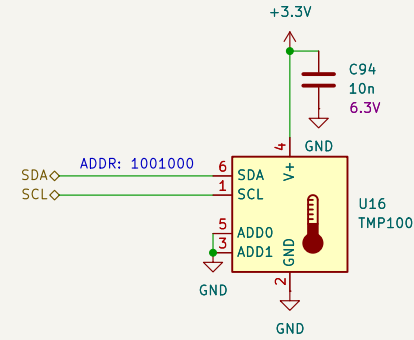
Date:

Rev:
Id: 7/10

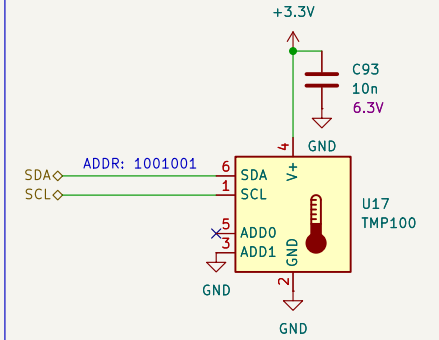
BATTERY POWER MONITOR



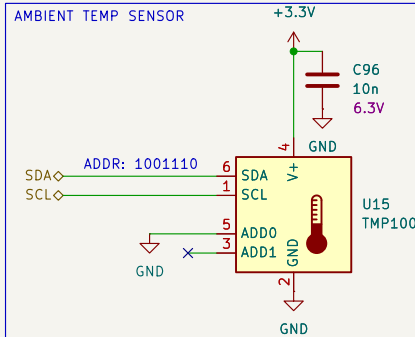
MOTOR DRIVER MOSFET TEMP MEASUREMENT SENSOR



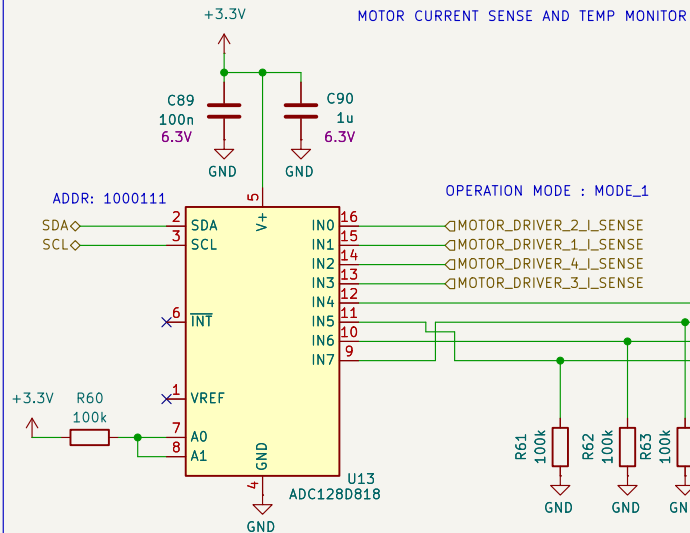
POWER MUX TEMP SENSOR



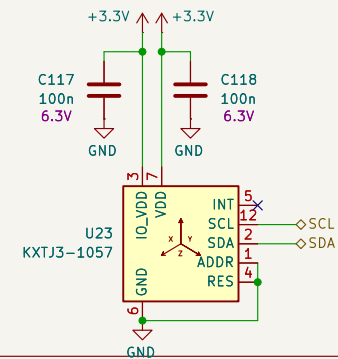
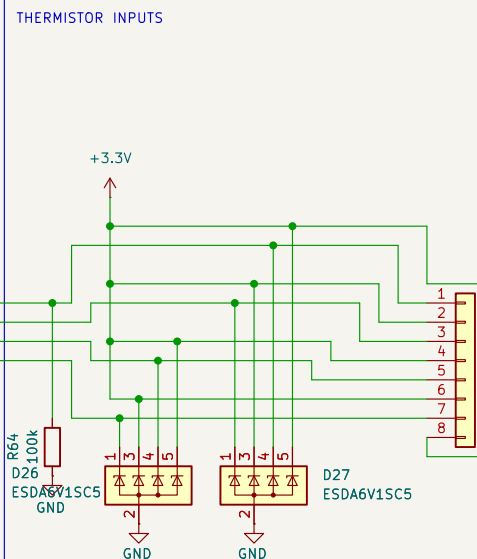
AMBIENT TEMP SENSOR



MOTOR CURRENT SENSE AND TEMP MONITOR



THERMISTOR INPUTS



points to measure temp:
on bare controlled power switch
power mux
motor drivers

Sheet: /BOARD_STAT_MESUREMENT/
File: BOARD_STAT_MESUREMENT.kicad_sch

Title:

Size: A4

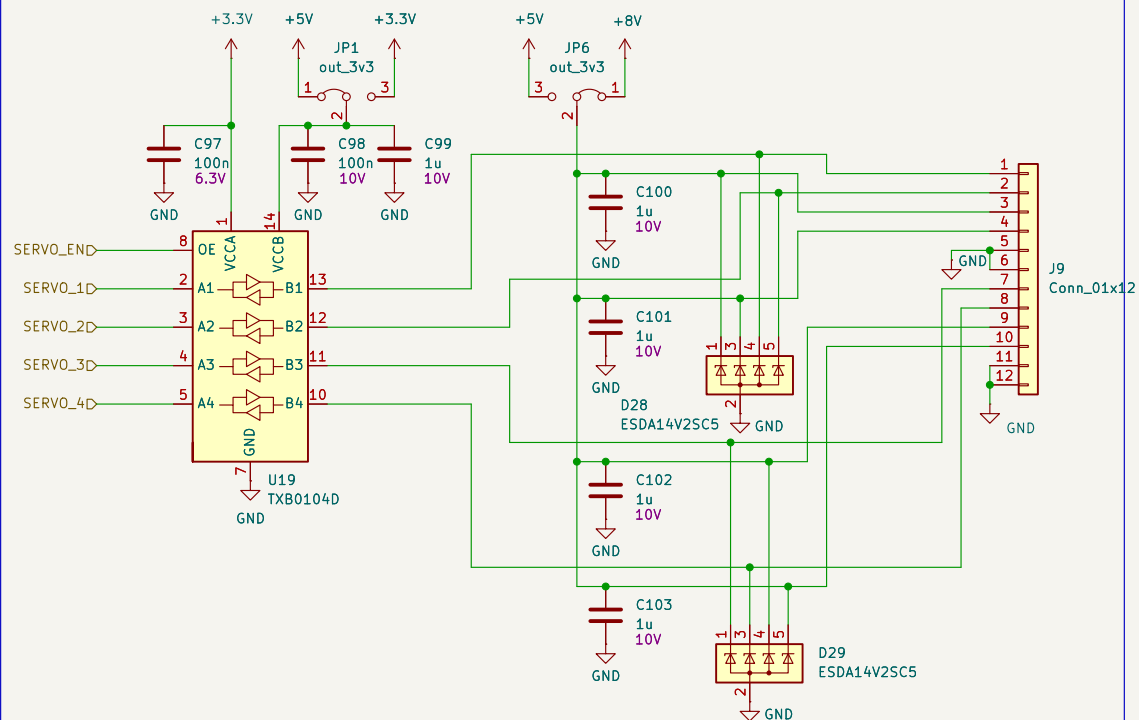
Date:

KiCad E.D.A. 10.0.0

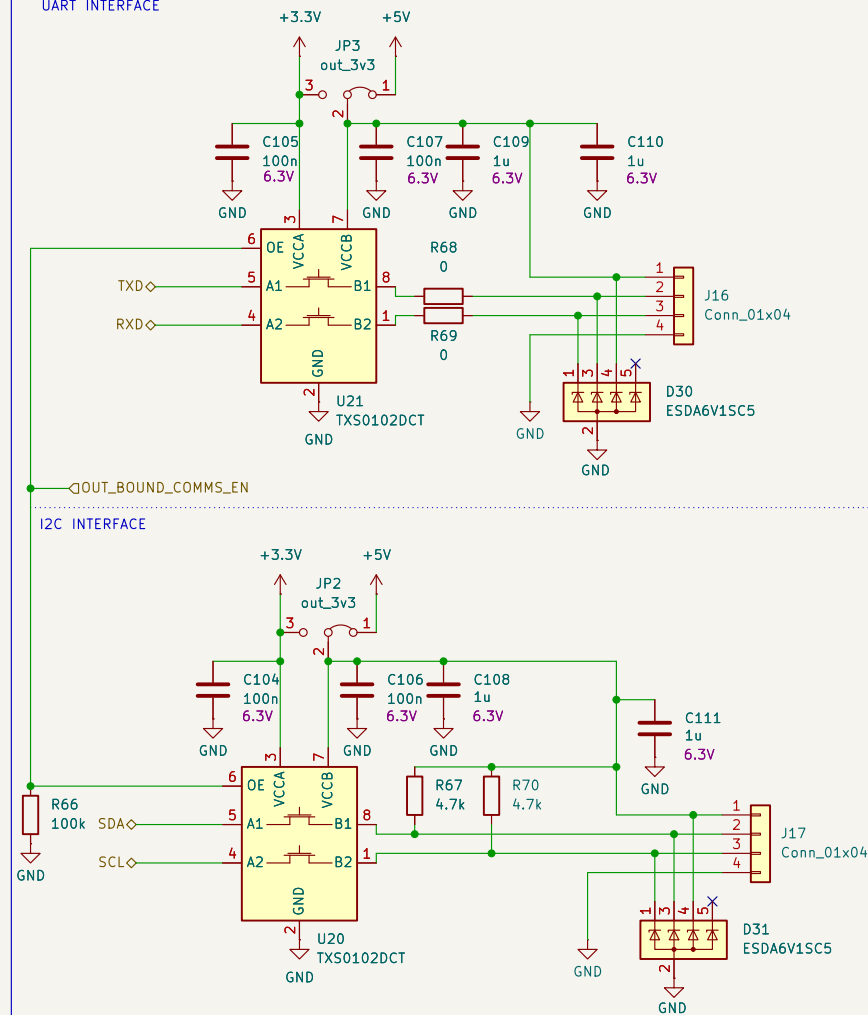
Rev:

Id: 8/10

SERVO INTERFACE



UART INTERFACE



Sheet: /EXTERNAL_INTERFACING_DEVICES/
File: EXTERNAL_INTERFACING_DEVICES.kicad_sch

Title:

Size: A4
KiCad E.D.A. 10.0.0

Date:

Rev:
Id: 9/10