

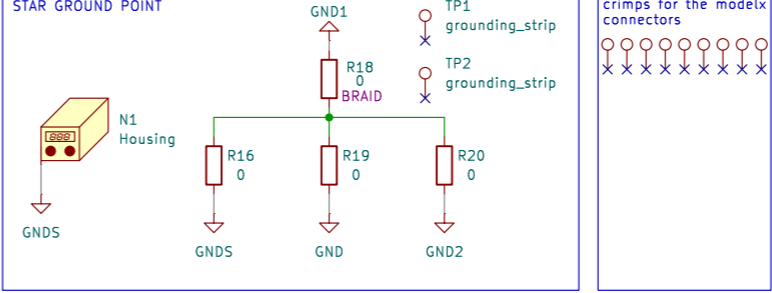
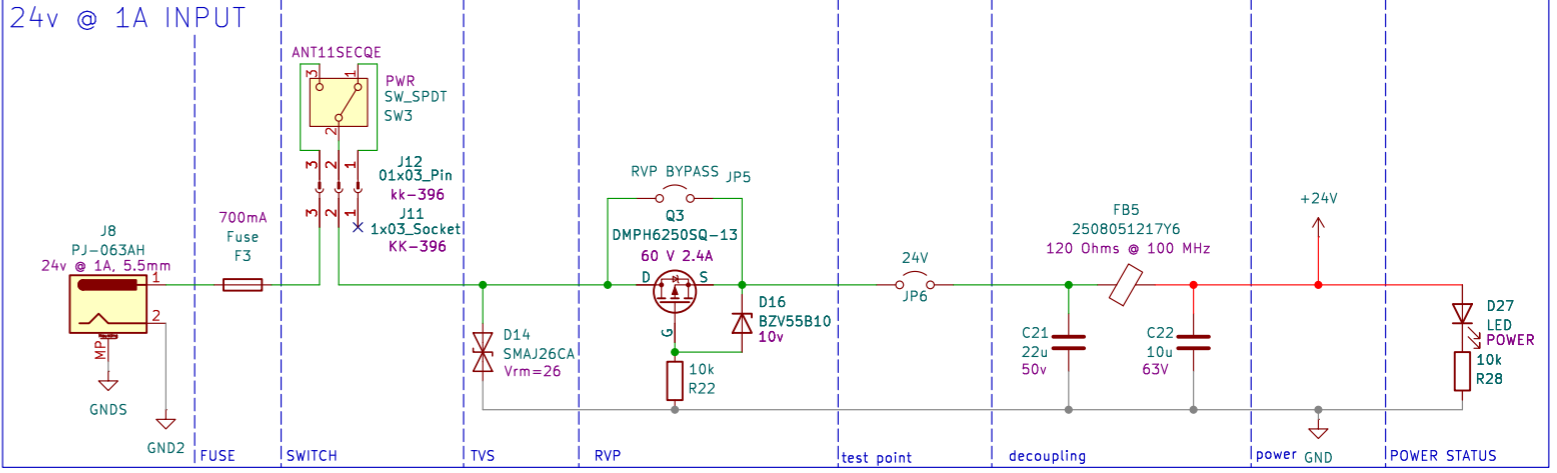
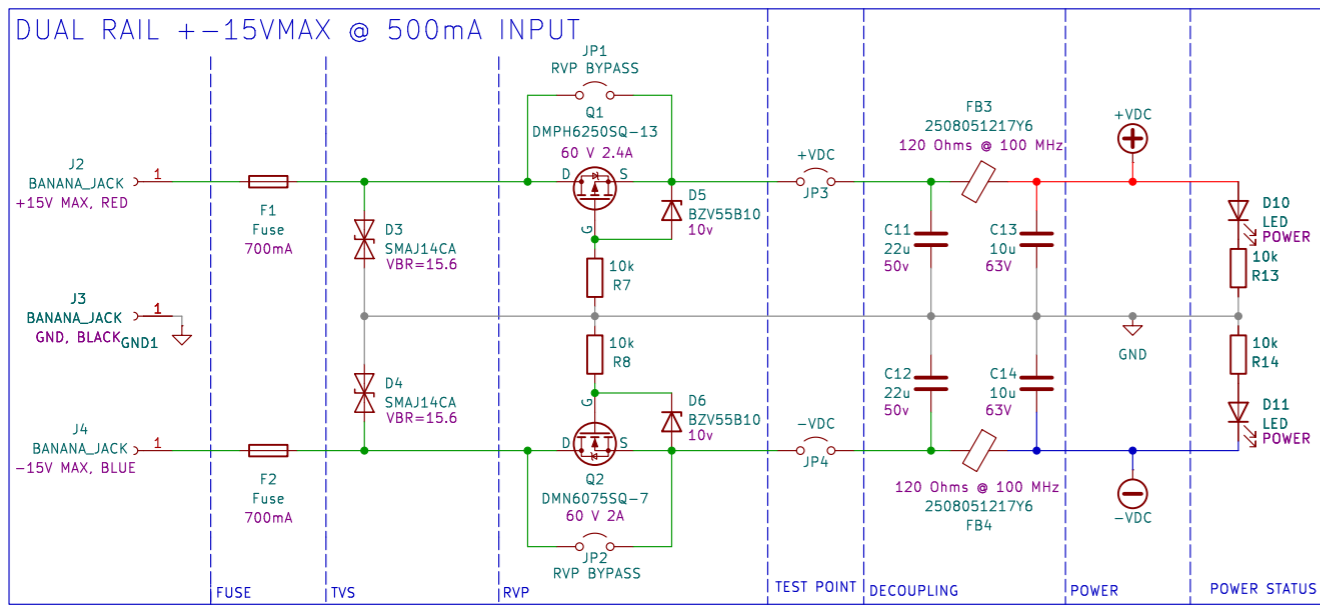
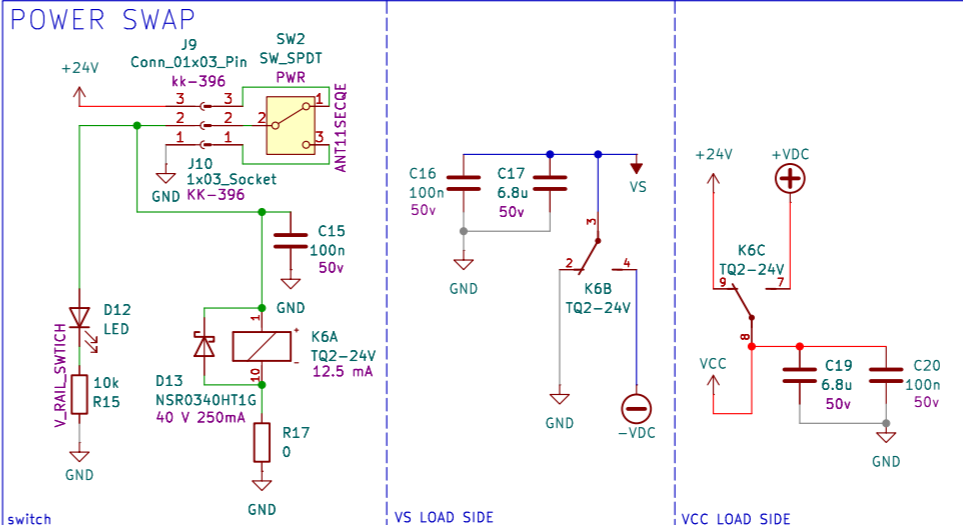
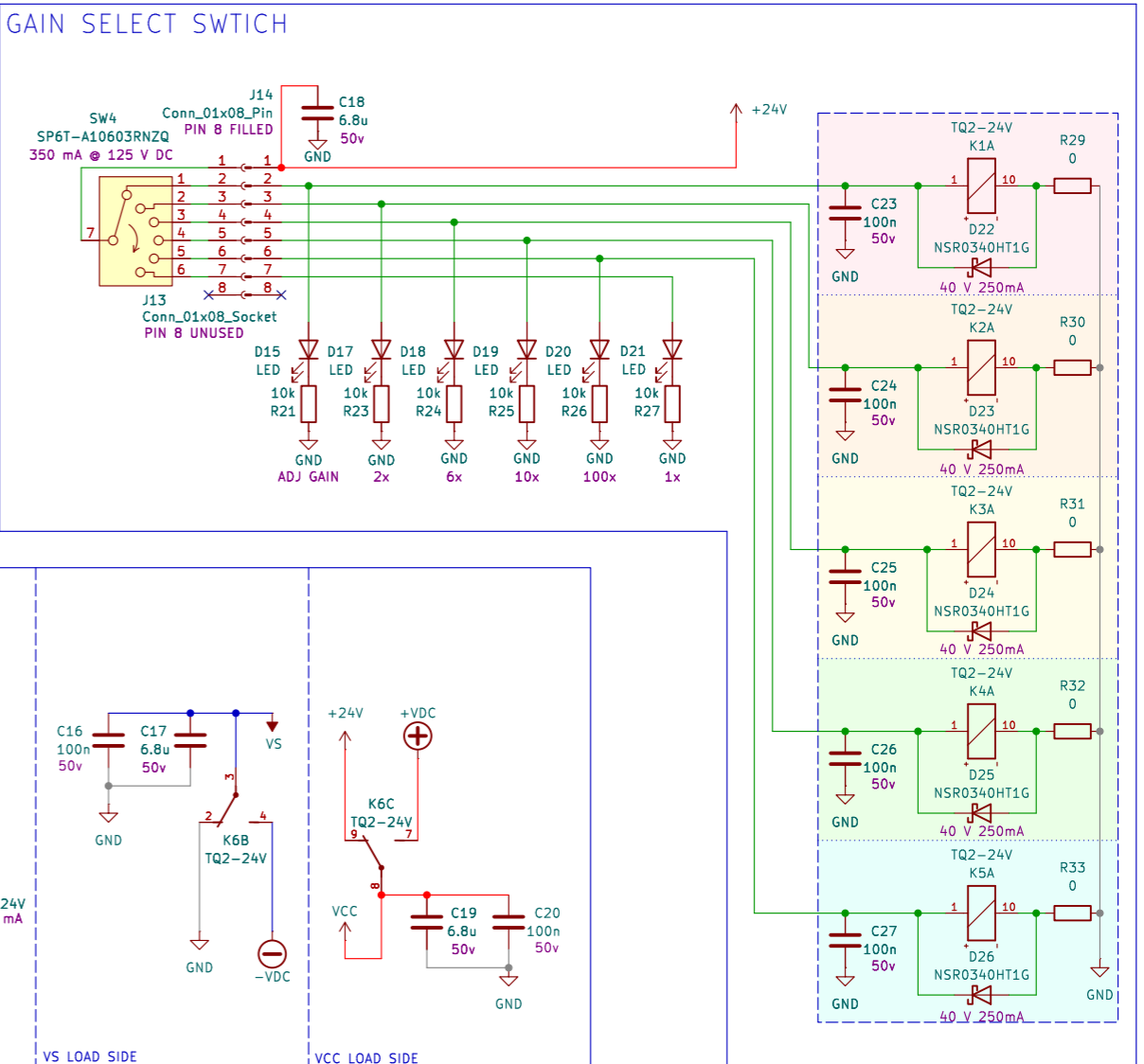
NOTES:

WHERE YOU SEE PINS AND SOCKETS NEXT TO EACH OTHER ELIDES TO THE FACT THE COMPONENT ON THE OTHER SIDE WILL BE PANEL MOUNT

THE BANANA JACK AND FUSES ARE ALL PANEL MOUNTED, AND THERE FOR THE FUSE SYMBOL IS USED TO STORE THE FOOT PRINT FOR THE ON BOARD CONNECTION

ONLY ONE POWER SWITCH IS NEEDED AS WHEN THE 24V IS DISCONNECTED THE RELAYS IN THE "POWER SWAP" CIRCUIT WILL SWAP BACK TO THE NC STATE WHICH IS CONNECTED TO 24V AND GND

BECAUSE WE WANT THE OUTPUT VOLTAGE OF THE AMP TO BE SOME GAIN OF THE OUTPUT OF THE FUNCTION GEN AND THE INCOMING VOLTAGE IS HALFED DUE TO THE VOLTAGE DIVIDER FORMED BY R_{xS} and R_{xL}. THAT MEANS ALL GAINS NEED TO BE MULTIPLIED BY 2



DESIGNER: LOGAN HENDERSON
 sirilpanda
 Sheet: /
 File: 10MHz-amp.kicad_sch
Title: SCOPE CREEP AMP
 Size: A3 Date: 2025-08-21
 KiCad E.D.A. 9.0.3
 stack up GND
 HS SIG
 GND
 LS SIG / PWR
 Rev: REV: A
 Id: 1/1