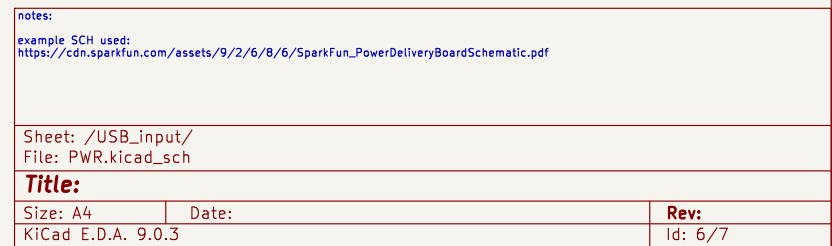
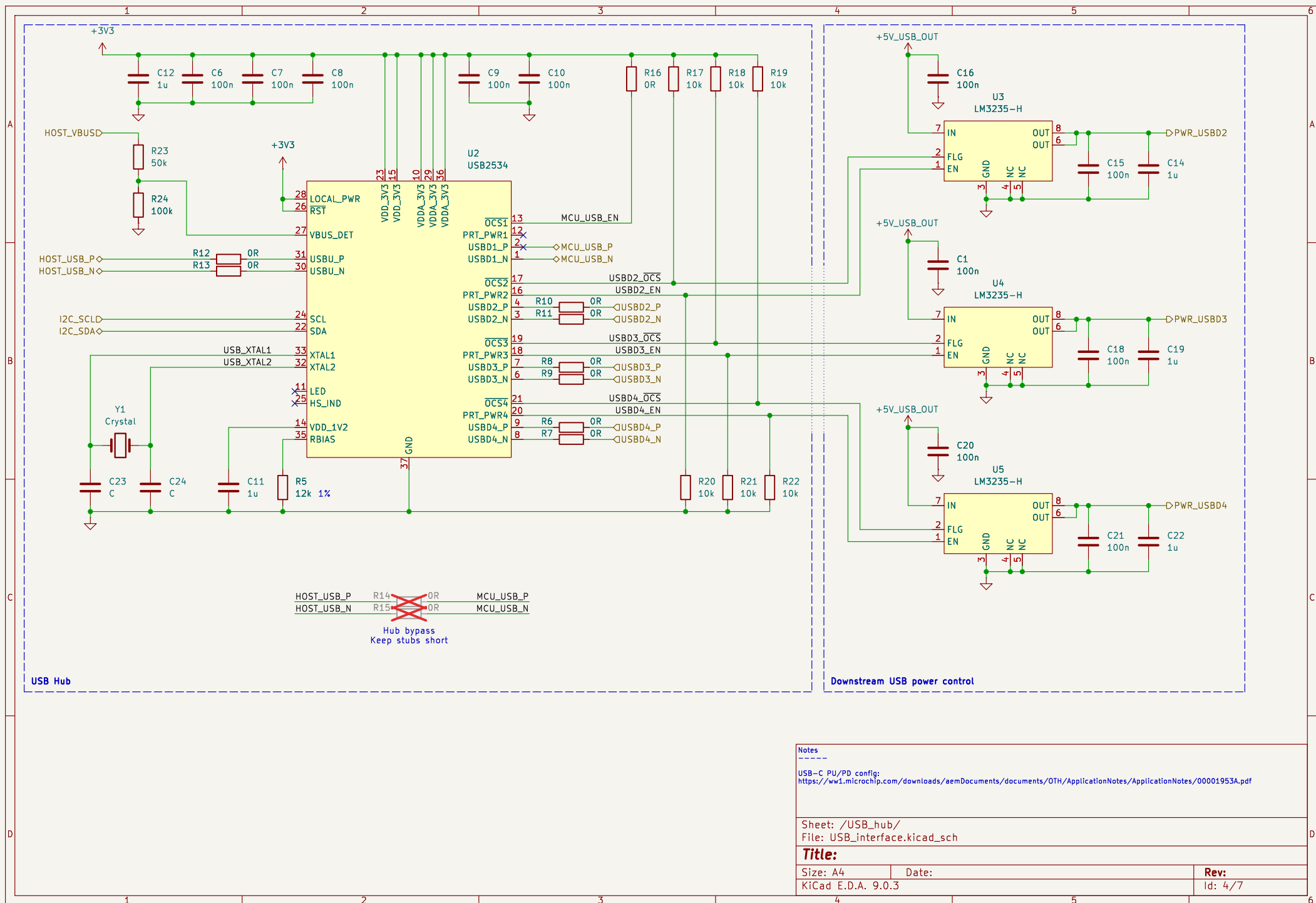


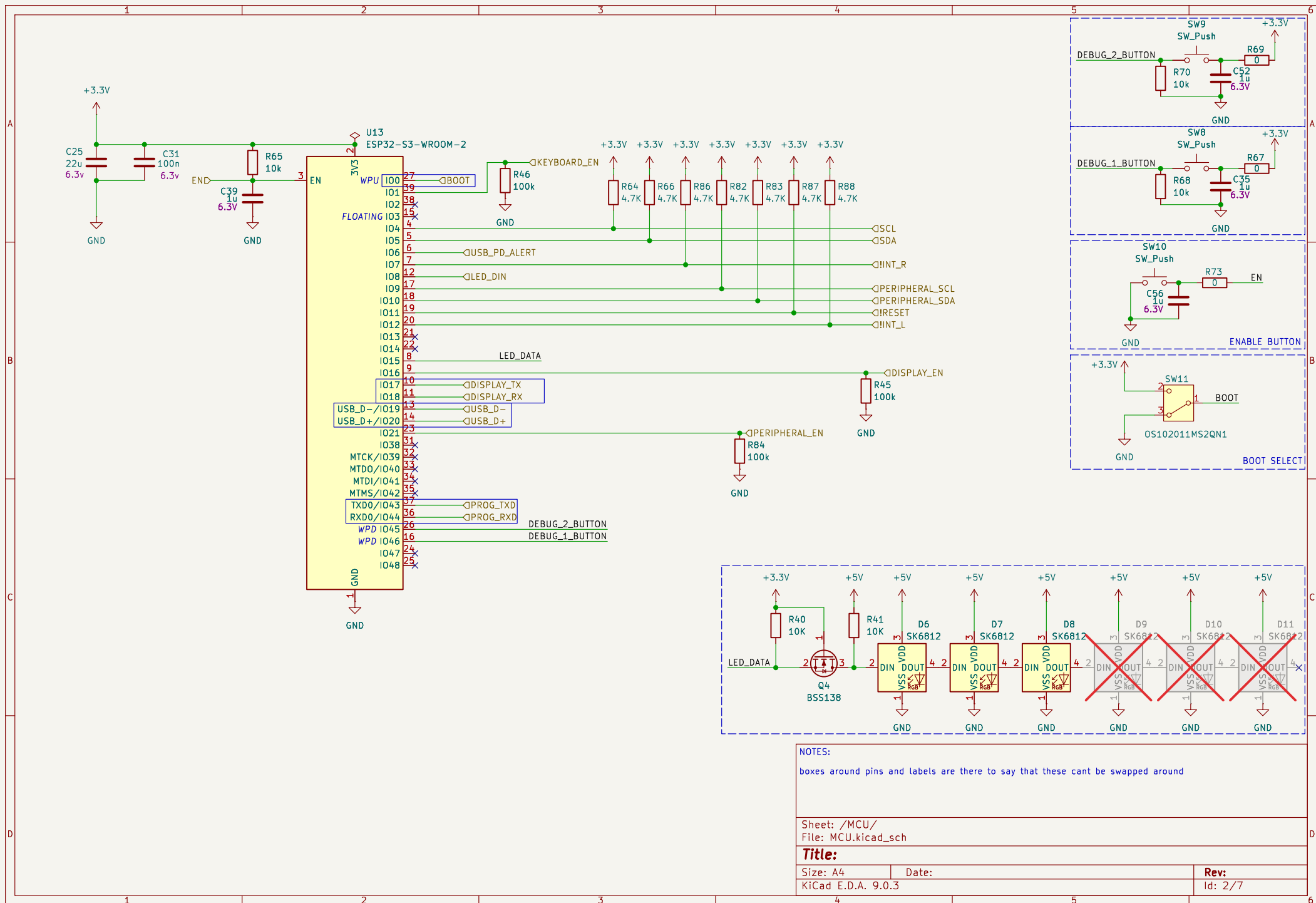
NOTES:		
peripherals share an i2c bus with the usb hub and pd controller since sharing the I2C directly with the keyboard could create an security problem with peripherals directly snooping on the keyboard presses		
Sheet: /		
File: keyboard_controller.kicad_sch		
Title:		
Size: A4	Date:	Rev:
KiCad E.D.A. 9.0.3		Id: 1/7



1	2	3	4	5	6
A					A
B					B
C					C
D					D
1	2	3	4	5	6

Sheet: /POWER/ File: POWER.kicad_sch		
Title:		
Size: A4	Date:	Rev:
KiCad E.D.A. 9.0.3		Id: 7/7





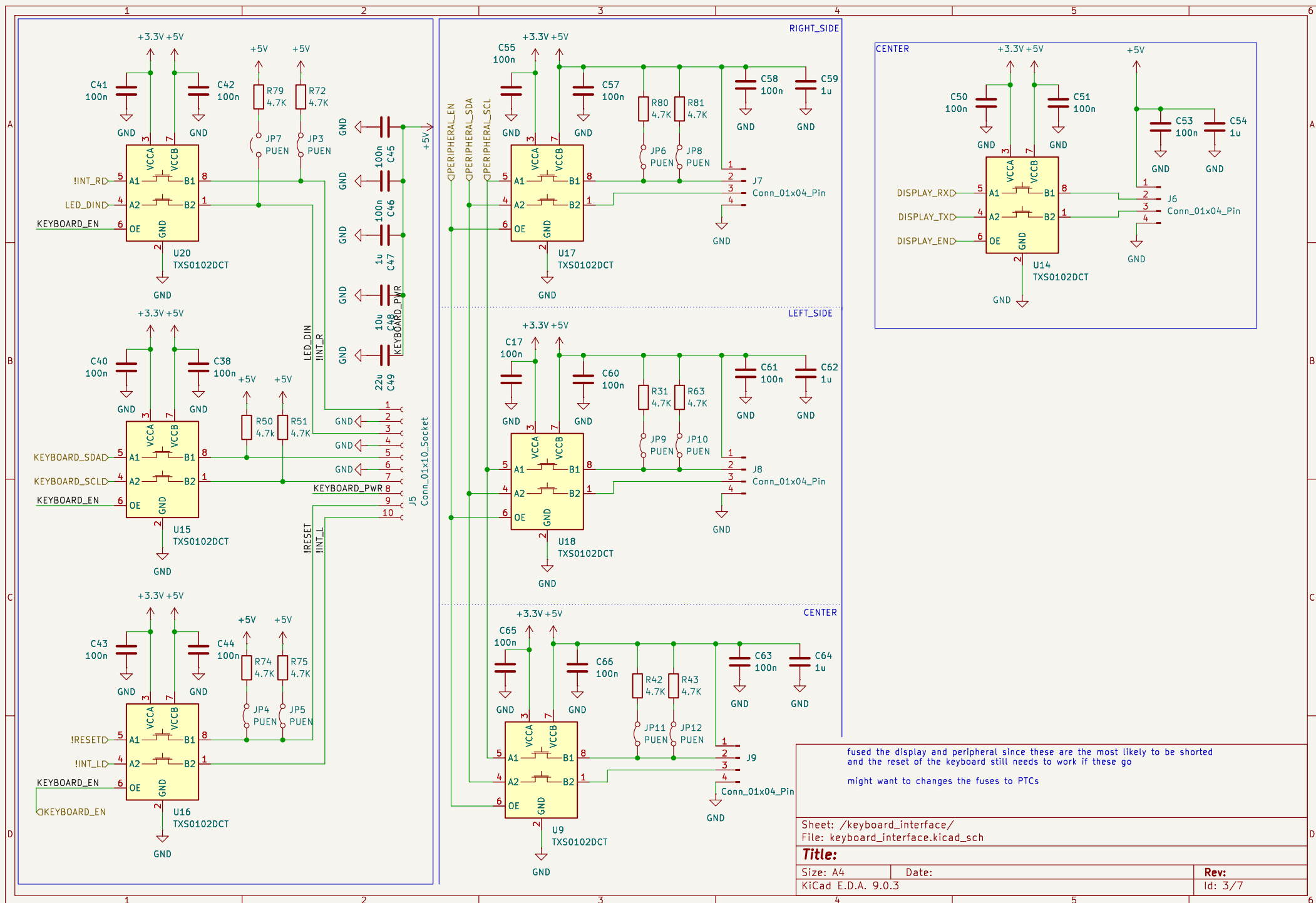
NOTES:

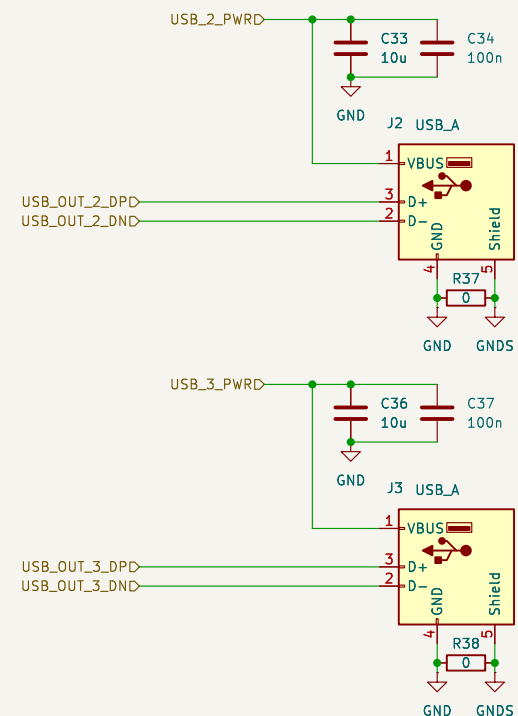
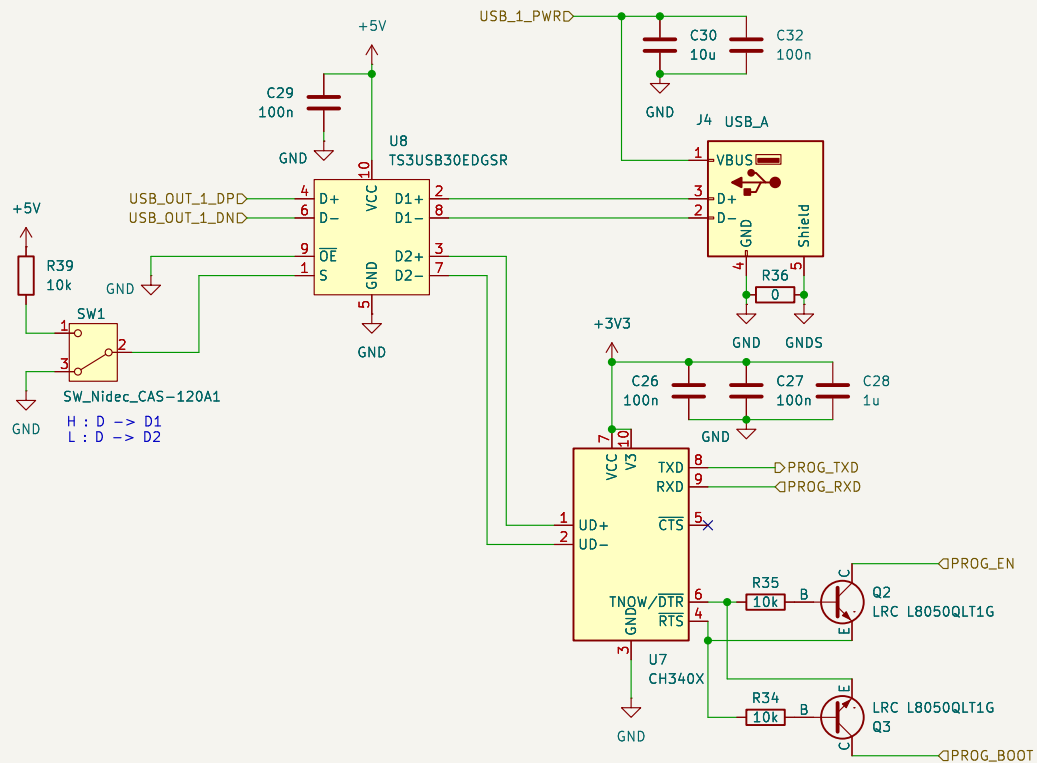
boxes around pins and labels are there to say that these cant be swapped around

Sheet: /MCU/
File: MCU.kicad_sch

Title:

Size: A4	Date:	Rev:
KiCad E.D.A. 9.0.3		Id: 2/7





Sheet: /USB_output_n_prog/
File: programming_interface.kicad_sch

Title:

Size: A4

Date:

KiCad E.D.A. 9.0.3

Rev:

Id: 5/7